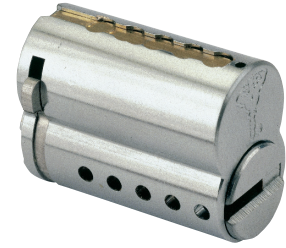


# Cylinder for "Yale" Type I.C. Locks



## Application

Retrofitting core of "Yale" type housing for various applications.

## Operation

Regular key: 360° rotation.

Control key: 90° rotation to enable core extraction.

## Materials

Body and plug: high quality brass

Cam: steel

Pins: nickel silver and stainless steel

## Standard finishes

Brass, nickel chrome matt

## Cylinder mechanism

Mul-T-Lock's unique, high precision pin tumbler system. Pick and drill resistant for High Security needs.

## Keys

Reversible nickel silver key with plastic key head and colored insert. Also available in all nickel silver.

## Cylinder options

- Classic, Interactive® platforms
- '3 IN 1' (changeable combination)
- Keyed different, keyed alike
- Master keyed

