

SPL Series



Application

Installed inside wood or metal doors to provide deadbolt locking.

Operation

- 360°/720° key rotation for deadbolt action
- Additional travel for latch action
- Left- or right-hand application

Options

- EN grade 3 hardware
- EN grade 4 hardware
- Fixed or moving handle

Materials

Case and mechanism: steel

Bolts: steel

Cylinder protector: hardened steel

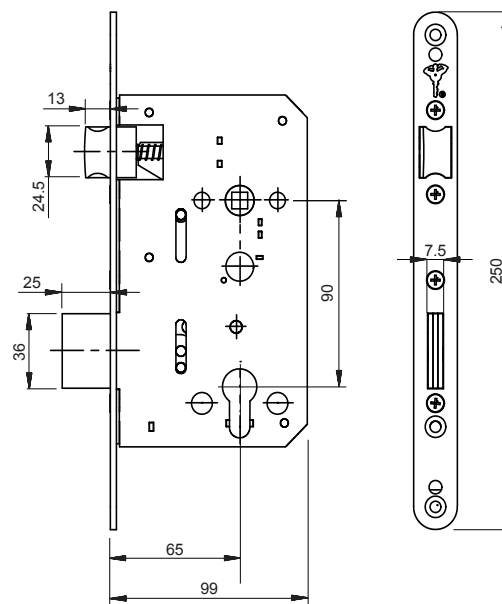
Additional features

- Square deadbolt
- Triple round deadbolts for steel and wooden doors
- Standard hardware (CC=90 mm).

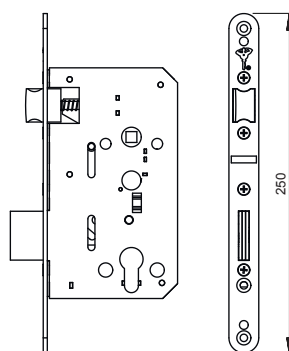
Standard

EN12209

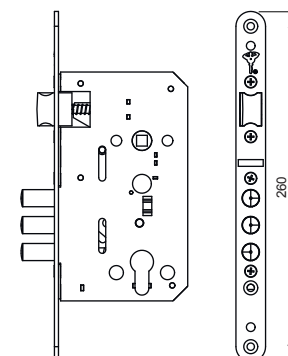
Note: for maximum security it is recommended to use Mul-T-Lock High Security escutcheons (EN grade 3 and 4)



Multipoint Locks



SPLS - P/N 26900340



SPLR - P/N 26900350